

December 14, 2018

To: Department of Local Affairs (DLG E-Portal)

Re: Blue Lake Metropolitan District No. 3; Boundary Map Submittal

To Whom It May Concern:

Pursuant Section 32-1-306, C.R.S., a special district shall maintain a current, accurate map of its boundaries and shall provide for such map to be on file with the county assessor, county clerk and recorder and the Department of Local Affairs (DLG) on or before January 1 of each year. The boundaries of the Blue Lakes Metropolitan District No. 3 have been revised and updated; the map showing the current boundaries of the District is attached.

Please respond to this e-mail to confirm your receipt of this filing.

If you have any questions or require additional information concerning this matter, please do not hesitate to contact our office. Thank you.

LEGAL DESCRIPTION AND BOUNDARY MAP

**BLUE LAKE METROPOLITAN DISTRICT NO. 3
TOWN OF LOCHBUIE, WELD COUNTY, COLORADO**

Blue Lake Subdivision Filing No. 1, Town of Lochbuie, Weld County, Colorado:

Lots 1-7, inclusive, Block 1; Lots 1-13, inclusive, Block 2; Lots 1-9, inclusive, Block 3; Lots 1-3, inclusive, Block 4; Lots 1-10, inclusive, Block 7; Lots 1-28, inclusive, Block 8; Lots 1-8, inclusive, Block 9; Lots 1-17, inclusive, Block 10; Lots 1-9 and 16-25, inclusive, Block 11; Lots 1-5, inclusive, Block 19; and Tracts B, C, and D;

Blue Lake Subdivision Filing No. 1, Town of Lochbuie, Weld County, Colorado:

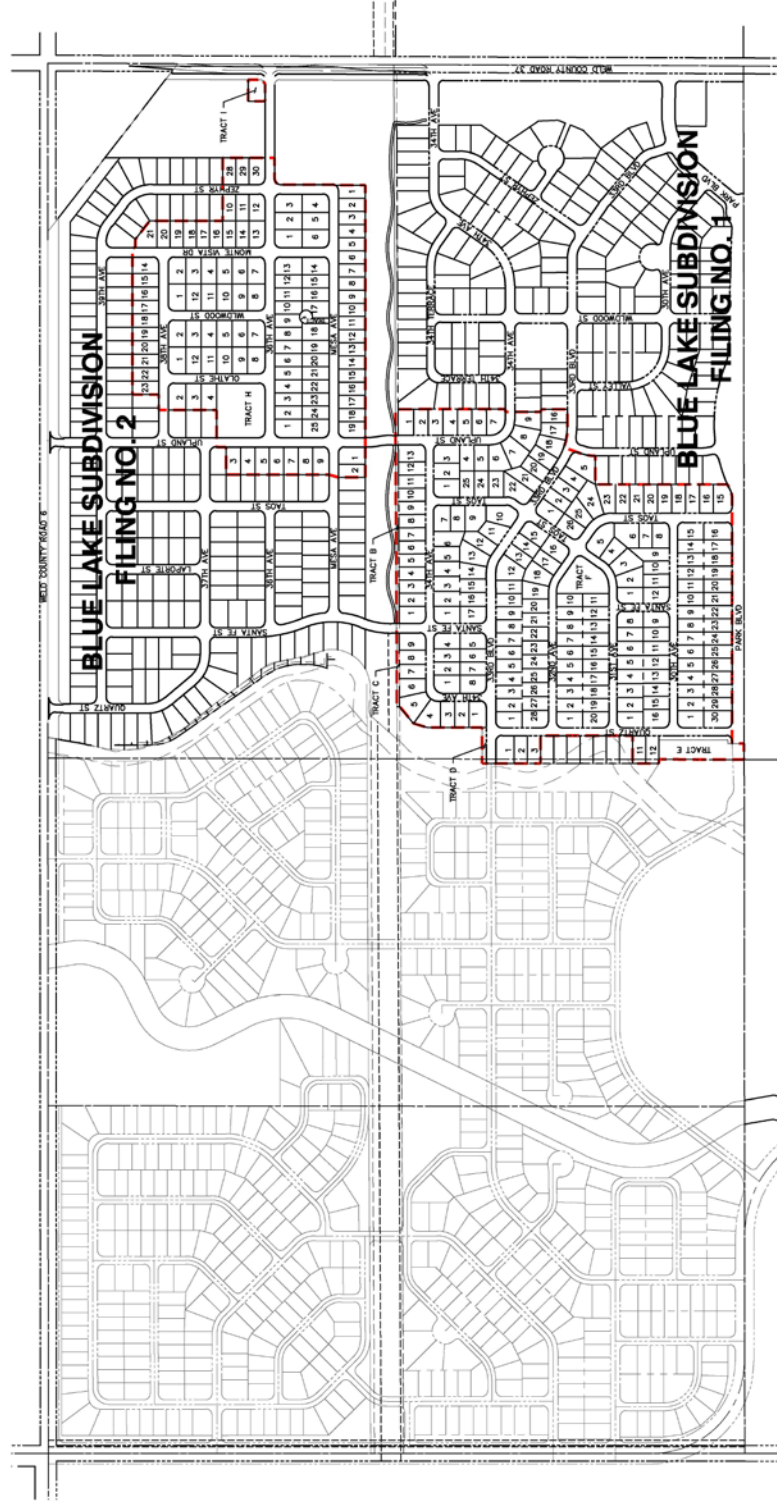
Lots 11 and 12, Block 4; Lots 1-30, inclusive, Block 5; Lots 1-16, inclusive, Block 6; Lots 11-20, inclusive, Block 7; Lots 15-26, inclusive, Block 19; Lots 1-12, inclusive, Block 20; and Tracts E and F;

Blue Lake Subdivision Filing No. 2, Town of Lochbuie, Weld County, Colorado:

Lots 28 through 30, inclusive, Block 2; Lots 1 through 19, inclusive, Block 3; Lots 1 through 2, inclusive, Block 4; Lots 14 through 23, inclusive, Block 10; Lots 10 through 21, inclusive, Block 11; Lots 1 through 6, inclusive, Block 12; Lots 1 through 25, inclusive, Block 13; Lots 1 through 12, inclusive, Block 14; Lots 1 through 12 inclusive, Block 15; Lots 2 through 4 inclusive, Block 16; Lots 3 through 9, inclusive, Block 17; and Tracts H, I, and J.

BLUE LAKE METROPOLITAN DISTRICT

DISTRICT 3 BOUNDARY MAP



DISTRICT 3
BOUNDARY

PROJECT NO. 1703359
DATE: 03/27/2018

ATWELL
666.650.000 www.atwellgroup.com
1431 LARK CREEK, CO 80528
CONTRACT: 177-180303
CITY OF BLUE LAKE, COLORADO

